

Open House 2334

Upholstery



Birch
2129



Vanilla
2130



Sunshine
2082



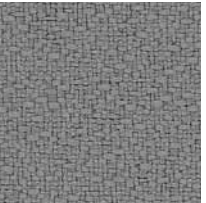
Straw
2034



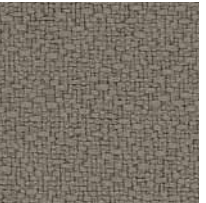
Goldenrod
2090



Angora
2035



Asteroid
2053



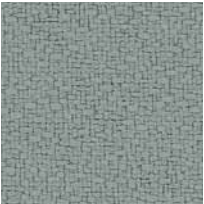
Goose
2049



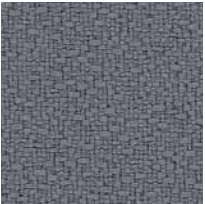
Fossil
2093



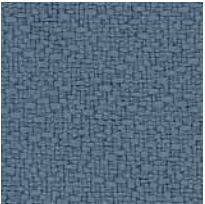
Onyx
2016



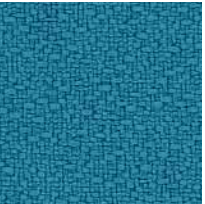
Slate
2017



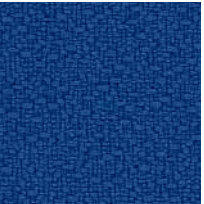
Wolf
2027



Quarry Blue
2026



Waterfall
2691



Lapis
2094



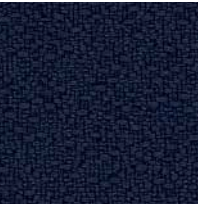
Deep Water
2051



Thistle
2085



Cobalt
2045



Midnight
2025



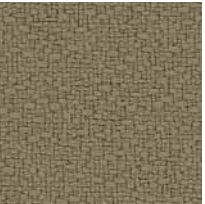
Graphite
2079



Green Olive
2048



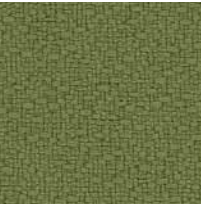
Eucalyptus
2047



Cumin
2050



Green Apple
2087



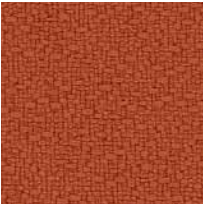
Willow
2028



Pine Needle
2022



Amber
2020



Pumpkin
2021



Poppy
2091



Geranium
2084



Red Delicious
2014



Henna
2052



Magenta
2692



Mulberry
2044



Aubergine
2036



Coffee Bean
2083

Open House 2334

Upholstery

Specifications

Content

35% post-consumer recycled polyester
65% pre-consumer recycled polyester

Weight

13.1 ± 1.0 oz./lin. yd.

Width

54" min. useable

Repeat

none

Backing

none

Treatment

none

Miscellaneous

Every effort has been made to ensure color accuracy of the digital images, however, please order a sample before specification. Application testing of this product is recommended. Colors may vary between dye lots. This is a directional fabric. Also available in 66" width (Anchorage 2335). 10 year performance warranty.

Proudly woven in the USA supporting our local communities.





Visit guilfordofmaine.com for samples.


Cleaning Code

Standard Care Label W-S. Clean with water based cleaning agents, foam or pure, water free solvents. Vacuuming or light brushing is recommended to prevent dust and soil buildup.

Performance

 **Colorfastness to Light (AATCC 16 Option 3)**
Grade 4 min. at 40 hours


 **Colorfastness to Crocking (AATCC 8)**
Grade 4 min. dry & Grade 3 min. wet

 **Breaking Strength (ASTM D5034)**
275 lbf min. warp and fill

Seam Slippage (ASTM D4034)
50 lbf min. warp and fill

Pilling Resistance (ASTM D3511)
Class 4 min.

 **Flammability**
CA Technical Bulletin 117-2013 Section 1
NFPA 260/UFAC Fabric Classification - Class I

 ***Abrasion (ASTM D4157)**
250,000 double rubs min. cotton duck



Terratex is a registered trademark of True Textiles, Inc. and designates fabrics that are made from 100% recycled or compostable material using increasingly sustainable manufacturing practices to produce a high quality product that is recyclable at the end of its useful life.



CO₂ emissions from 100% of the electricity used by the manufacturer to produce this product have been measured and offset in accordance with The CarbonNeutral Protocol.

*ACT® registered certification marks.